

Enterprise All-in-One Service Computer

Avalo Family with High Flexibility

- / Intelligent POS Systems
- / X86 All-in-One Computer
- / ARM All-in-One Computer
- / Multifunctional Touch Monitor



ADVANTECH

Enabling an Intelligent Planet

Specifications

► All-in-One Service Computer



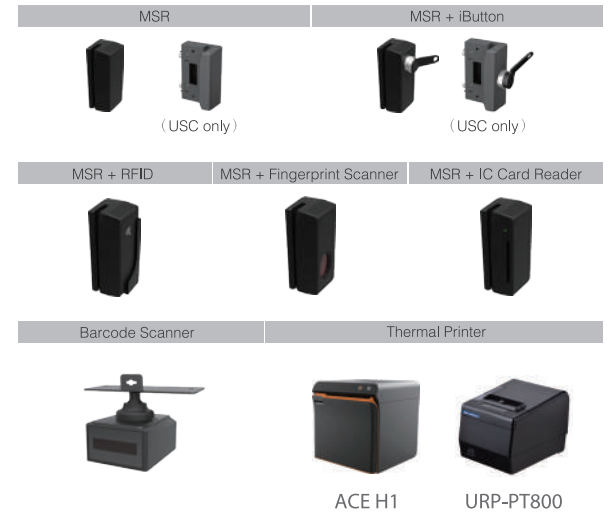
Model		ARM		X86	
Model		USC-130	USC-160	USC-250	UPOS-211
System	CPU	Rockchip ARM Cortex-A17 RK3288 Quad core up to 1.6GHz	Rockchip ARM Cortex-A17 RK3288 Quad core up to 1.6GHz	SkyLake-U, i5-6300U/CORE i3-6100U/ Celeron 3955U	Intel® Celeron® J1900/Core™ i3/i5
	OS	Android 6.0 / 8.1	Android 6.0 and Linux	POSReady 7, Windows 7 Pro, Windows 8.1Pro(64-bit), Windows 10 IoT Enterprise,	Windows 10 IoT Enterprise, Win 7/8 Pro, POSReady 7, Linux Kernel 3.13, Android
Storage		8GB on board eMMC (Max to 16GB for Optional) , Micro SD (up to 32GB)		2x M.2 2242 SSD	1 x 2.5" SATA HDD/SSD bay/mSATA
Display	Size	11.6" TFT LCD(1366x768)	15.6" TFT HD LCD (1366x768) 15.6" TFT FHD LCD (1920x1080)	15" TFT LCD (1024 x 768)	
	Brightness	250 cd/m ²	HD: 250 cd/m ² / FHD:350 cd/m ²	300 cd/m ²	
	Touchscreen	P-CAP		P-CAP, Flat Glass	5-wire resistive/P-CAP
COM		1X COM (RS232/485/422), Max to 2xCOM (extra COM port support RS232 only)		4 x COM	2 x COM (up to 5 max.)
External I/O	USB	2xUSB 2.0 (max to 4xUSB 2.0), 1xUSB OTG		4 x USB 3.0 / 2 x USB 2.0 / 2 x Micro USB	UPOS-211D:1 x USB 3.0, 4x USB 2.0 UPOS-211F:2 x USB 3.0, 3 x USB 2.0
	Output	1xHDMI		1 x VGA	1 x VGA/DP
	Ethernet	1xRJ45		2 x RJ45	1 x RJ45
	Cash Drawer	NA		1 x RJ11 (12/24V)	
	Audio	1x Mic in		1 x Line out, 1 x mic in	1 x line out, 1 x mic in(optional)
	Speaker	1x2W speaker	2x2W speaker	2 x 2W speaker	1 x 2W speaker
OS Support Kiosk	Secondary Display	• 11.6" TFT LCD(Avalo stand) • 15.6" TFT LCD(Avalo stand)	• VFD • 11.6" TFT LCD(Avalo stand) • 15.6" TFT LCD(Avalo stand)	• VFD • 10.1" LCD (rear) • 11.6"/15"/15.6" LCD(pole) • RFID/iButton	
	Peripherals	External: MSR/ iButton /1D or 2D barcode scanner, Embedded : RFID/ Camera		MSR/Barcode Scanner / Camera	MSR, MSR + fingerprint scanner, MSR + RFID, MSR + iButton, MSR + IC card reader, barcode scanner
Connectivity		Wifi (802.11a/b/g/n/ac) or Bluetooth(4.2)		Wi-Fi (802.11b/g/n) or Bluetooth	
Color		Black/White		Black/White	orange/black/white
IP Rating		IP65 (Front Panel)		IP65 (Front Panel)	
Dimensions/Weight		295x190x34mm/2kg	384x239x34mm/3.5kg	352 x 276 x 46 mm/ 6.9kg	354 x 327 x 237 mm/5.2 kg

► Touch Monitor



Model		UPOS-M15	USC-M3	USC-M6
Display	Panel Resolution	15" TFT LCD (LED backlight) 1024 x 768	11.6" TFT LCD (LED backlight) 1366 x 768	15.6" wide TFT color LCD (16:9) HD: 1366 x 768 / FHD: 1920 x 1080
	Brightness	250 cd/m ² (400cd/m ² optional)	250 cd/m ²	HD: 250 cd/m ² ; FHD: 350 cd/m ²
	Touch Screen	P-Cap Touch		
External I/O	Video in	VGA Port (DSUB-15) HDMI (Optional)	VGA Port (DSUB-15) HDMI	VGA Port (DSUB-15) HDMI
	Audio in	3.5mm jack		
	USB	For Touch panel		
	DC-In	2-pin power jack	12V DC in power jack	12V DC in power jack
Control Button	Power	Power on/off		
	Menu	OSD menu		
	Up	selection up		
	Down	selection down		
Others	Speaker	2W x 2	2W	2W x 2
	Mount	VESA mount 75 x 75 mm		
	Hatch	Right/Bottom hatch reserved mounting for optional module		
	Adapter	12V 25W		
Optional Module	Side mount Peripherals	MSR	MSR or i-button	MSR or i-button - External camera / RFID - Embedded
Mechanical & Environmental	Case Color	Black /White / Black + Orange	Black /White	Black /White
	Operation Temperature	0 ~ 40° C (32 ~ 104° F)		
	Humidity	10 ~ 95% @ 40° C non-condensing		
	EMI / Safety	FCC/CE/CCC/CB/UL/BSMI	FCC/CE/CCC/BSMI/VCCI/CB/UL	

► Peripherals



Advantech Headquarter

No. 1, Alley 20, Lane 26, Rueiguang Road, Neihu District, Taipei, Taiwan 11491
Phone: 886-2-2792-7818 www.advantech.com

US/Canada: 1-888-576-9668
Europe: 00800-2426-8080/8081
Netherlands: 31-76-523-3100
China: 800-810-0345

Taiwan: 0800-777-111
Japan: 0800-500-1055
Korea: 080-363-9494
Other countries: 0800-777-111

860000510



Enabling an Intelligent Planet

Avalo Family USC Series

For Windows / Linux Models

WISE-PaaS/DeviceOn

Advantech DeviceOn makes it easier than ever to onboard, visualize, operate, and manage all your IoT devices from a single location.

Device Management

Device monitoring and diagnostics
Device control and update

Data Management

Data acquisition and storage
Secure data access

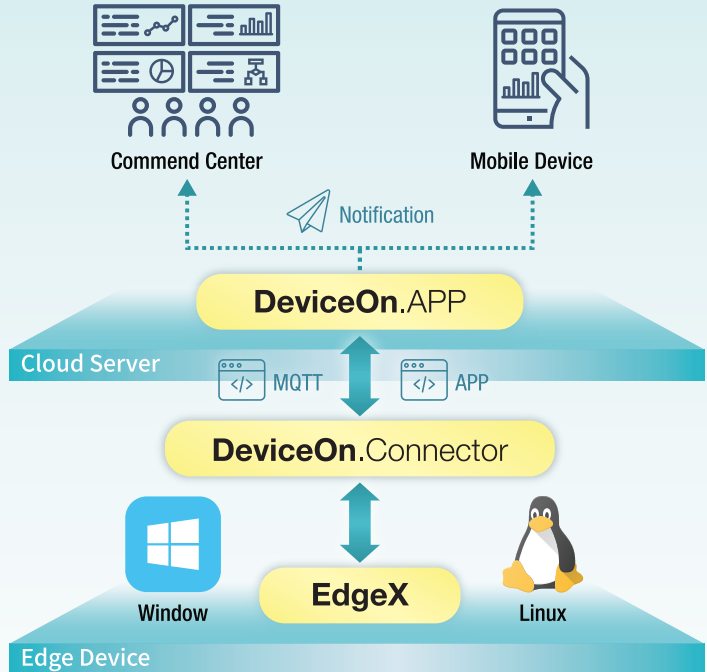
Connectivity Services

Device connectivity
Plug-n-play peripherals

Peripheral Monitoring via EdgeX

Thermal printer, barcode scanner,
ticket checker and so on.

Events & Notifications



For Android Models

WISE-PaaS/AndroidDM

A developer-friendly and customizable enterprise Android platform for eco-system partners to build industry-focused field applications.

APP Store

Remote installation, deletion and upgrade

Over-the-Air (OTA)

Remote firmware OS image upgrade

Group Manager

Remote batch management

Easy Deployment

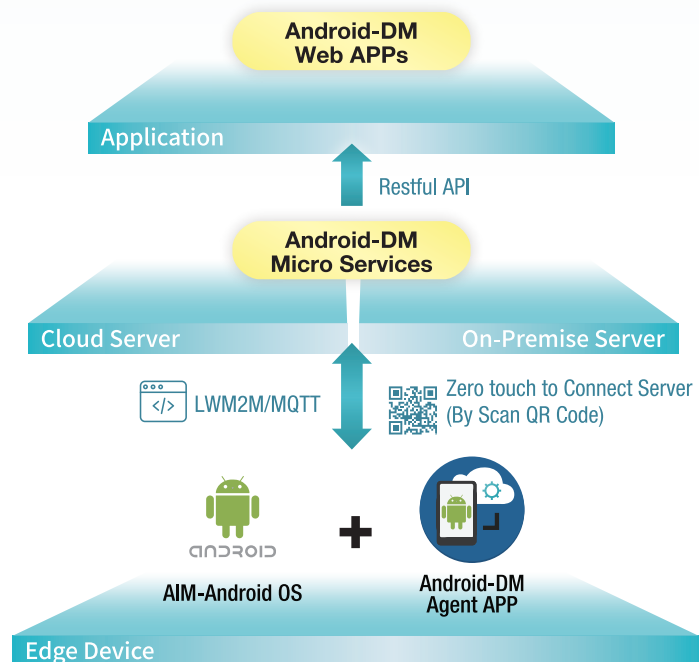
Zero Touch and QR code scan to deploy new clients

APP Security

White list, encryption, remote device monitoring

Remote KVM

Remote desktop control



Avalo Family

The name 'Avalo' comes from Sanskrit 'Avalokiteśvara' which is a bodhisattva who embodies the compassion of all Buddhas. Inspired by the appearance of the bodhisattva, Avalo Family is designed with the concepts of high flexibility, high agility, and infinite possibilities.

Advantech's all-in-one service computer systems offer stylish solutions that can be equipped with various modular peripherals and integrated with remote management software and cloud-based digital signage to support the provision of diverse value-added services that enhance customers' shopping experience. These systems also enable store managers to collect consumer behavior data for subsequent analysis and operational optimization.

AI

ARM



USC-13

11.6"

Touch Monitor



USC-M3

11.6"

UPOS-M15

15"

USC-M6

15.6"



Avalo

Dual

Application Scenarios

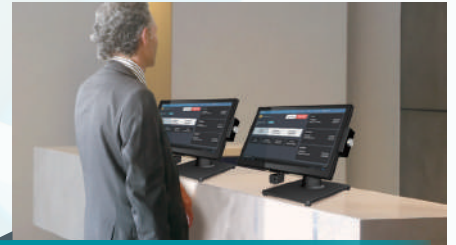
Retail & Hospitality



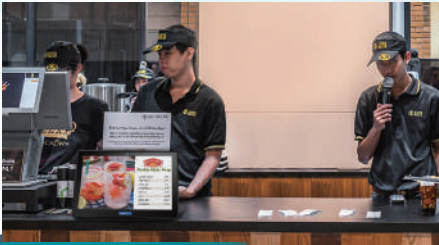
Intelligent POS System



Kitchen Display System



Hotel Self-Checkin System



eMenu Board



Self-ordering System



Self-Checkout Terminal

Factory & Warehouse



Warehouse Information System



Process Information Terminal



Equipment Control Terminal

Gaming & Lottery



Lottery Interactive Terminal



Gambling Information Signage



Gaming Self-Service Kiosk

Service Computer

X86



USC-160

15.6"



UPOS-211

15"

USC-250

15"

Peripheral



MSR



MSR +
iButton



MSR +
RFID



MSR + IC
Card Reader



MSR +
Fingerprint
Scanner



Barcode
Scanner



Thermal
Printer

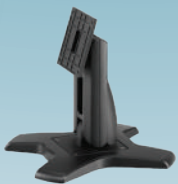
Avalo Family

Infinite Possibilities
Unlimited Combinations

Stand



Hinge



Single Type



Kangaroo Stand



Multi-functional